



Comune di Sonnino

Provincia Di Latina

Assessorato

LL/PP- URBANISTICA- CACCIA- TERRITORIO- CIMITERO

RESPONSABILE AREA 3.1 ARCHITETTO PIERLUCA NATALINI

RESPONSABILE AREA 3.2 ARCHITETTO DONATELLO CARDARELLI

ASSESSORE GIANNI CARROCCIA

ESTRATTO SOVRAPPOSIZIONE PLANIMETRICA PARCO AUSONI SU IMMAGINE SATELLITARE PRELEVATE DAL

https://sit.provincia.latina.it/webgis_provincialatina

TAV 1 LOC. MONTE ROMANO RETICOLO GIALLO AREA PARCO



An aerial photograph of a landscape, likely a hillside or mountain slope. The terrain is covered with dense green vegetation, possibly trees or shrubs, interspersed with patches of bare, light-colored soil or rock. A prominent feature is a large, irregularly shaped area that is overlaid with a green diagonal hatching pattern, extending from the top right towards the bottom left. This hatched area appears to be a specific site of interest or a boundary. In the upper left portion of the image, there are several rectangular plots of land, some of which are also covered in vegetation, while others are bare. A dirt road or path is visible winding through these plots. In the center of the image, there is a white rectangular box containing the text "TAVOLA 2 MONTE ROMANO" in black, uppercase letters. The overall scene suggests a natural or semi-natural environment, possibly a park or a protected area, with a specific focus on the hatched region.

TAVOLA 2 MONTE ROMANO

An aerial photograph of a landscape. The left side shows a dense forest of green trees. To the right of the forest is a cleared area with a grid pattern, possibly agricultural fields. A yellow line runs vertically, separating the forest from a large area of land covered in diagonal hatching. The hatched area contains several circular features, likely archaeological sites. A white text box is overlaid on the hatched area.

TAVOLA 3 MONTE ROMANO

TAVOLA 4 MONTE ROMANO

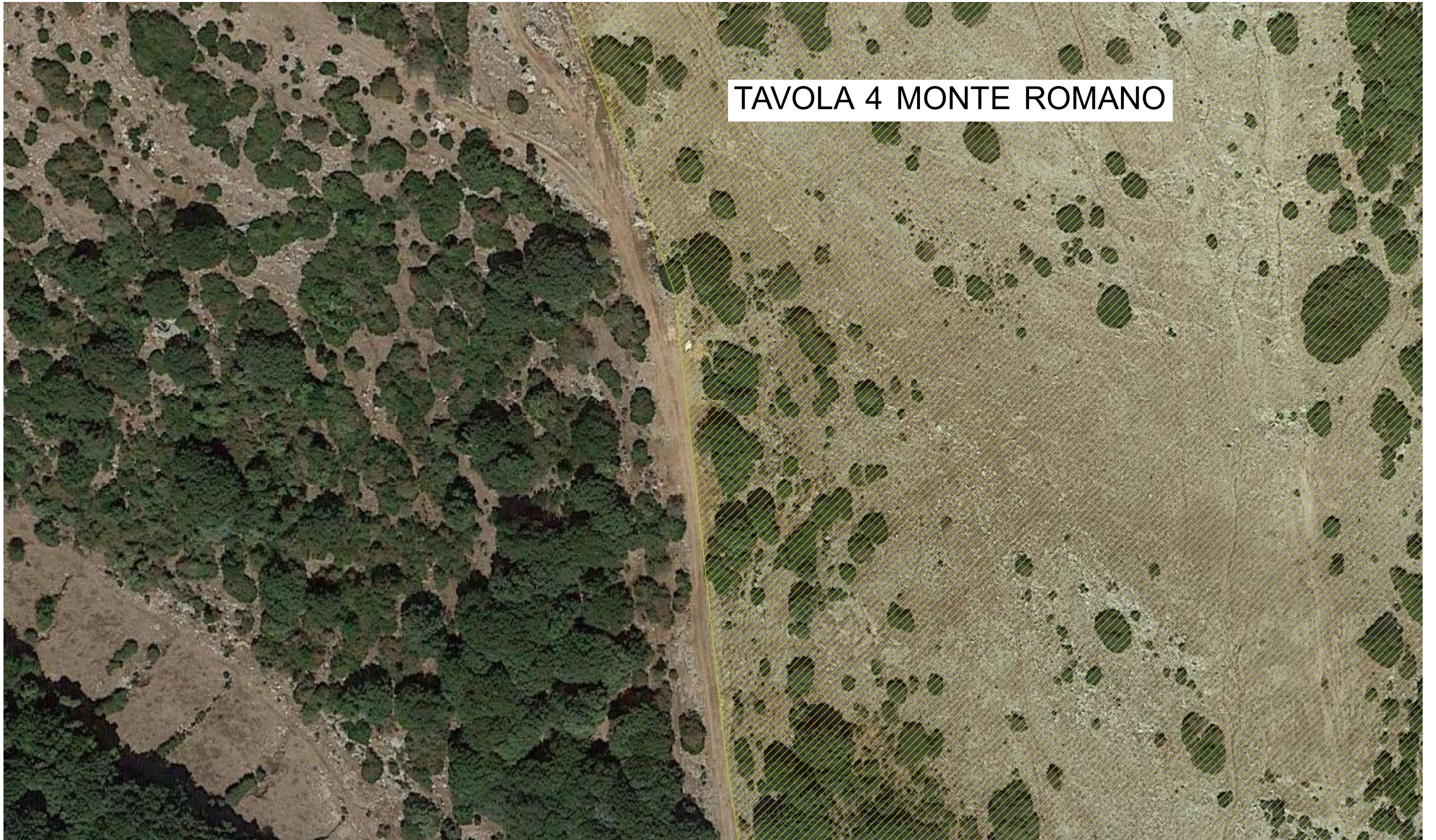
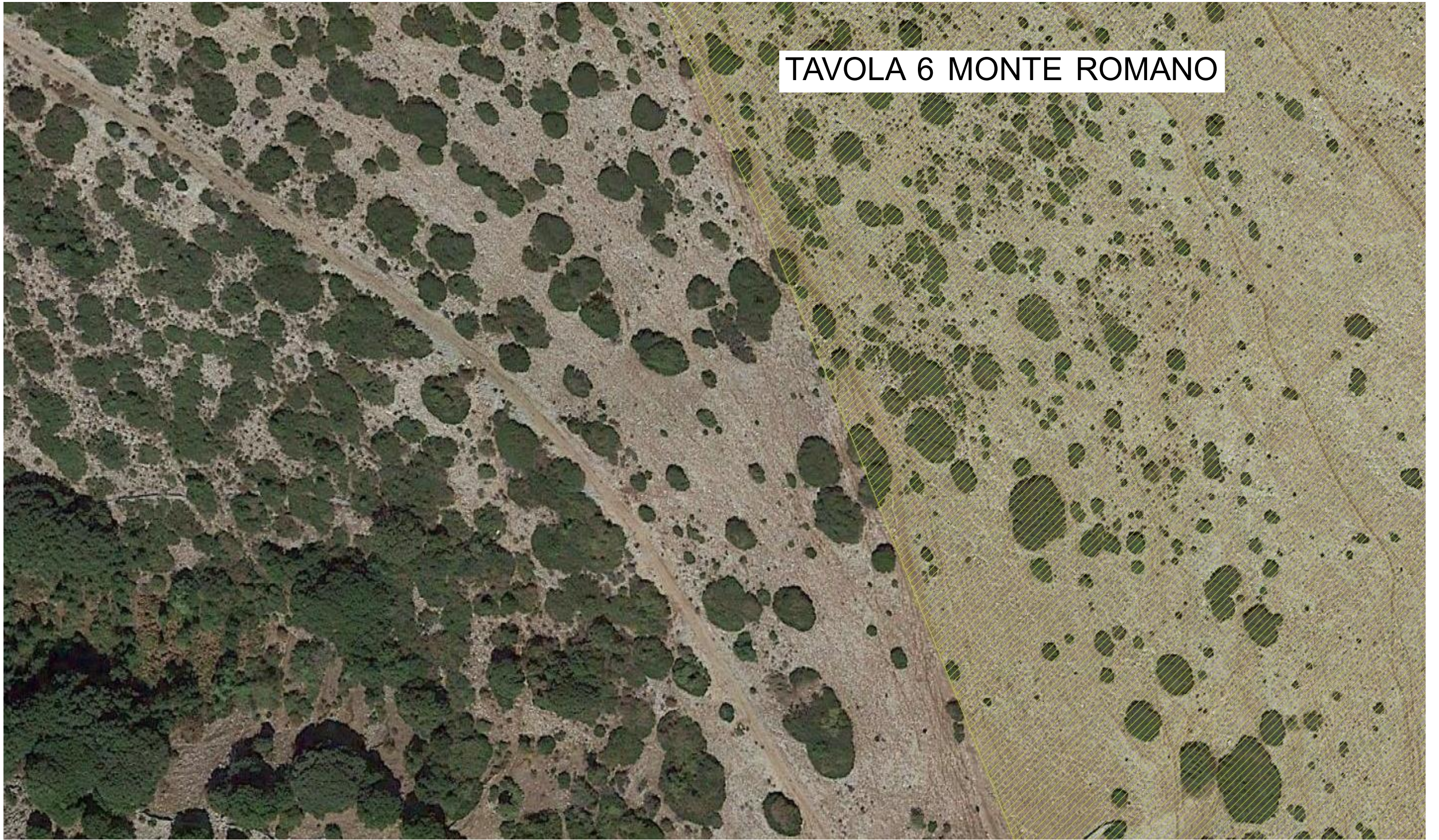


TAVOLA 5 MONTE ROMANO



TAVOLA 6 MONTE ROMANO



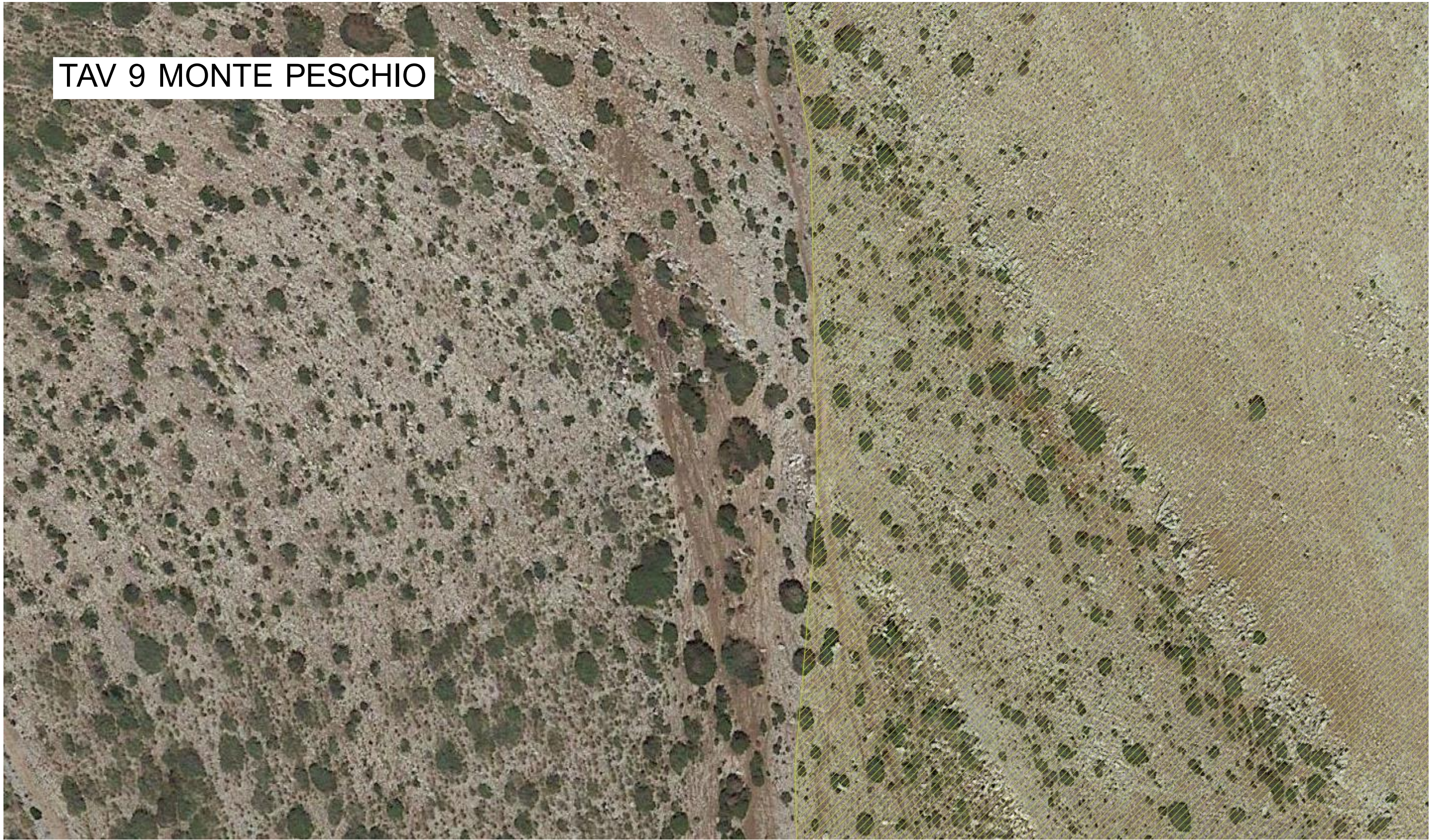
TAV 7 MONTE PESCHIO



TAV 8 MONTE PESCHIO

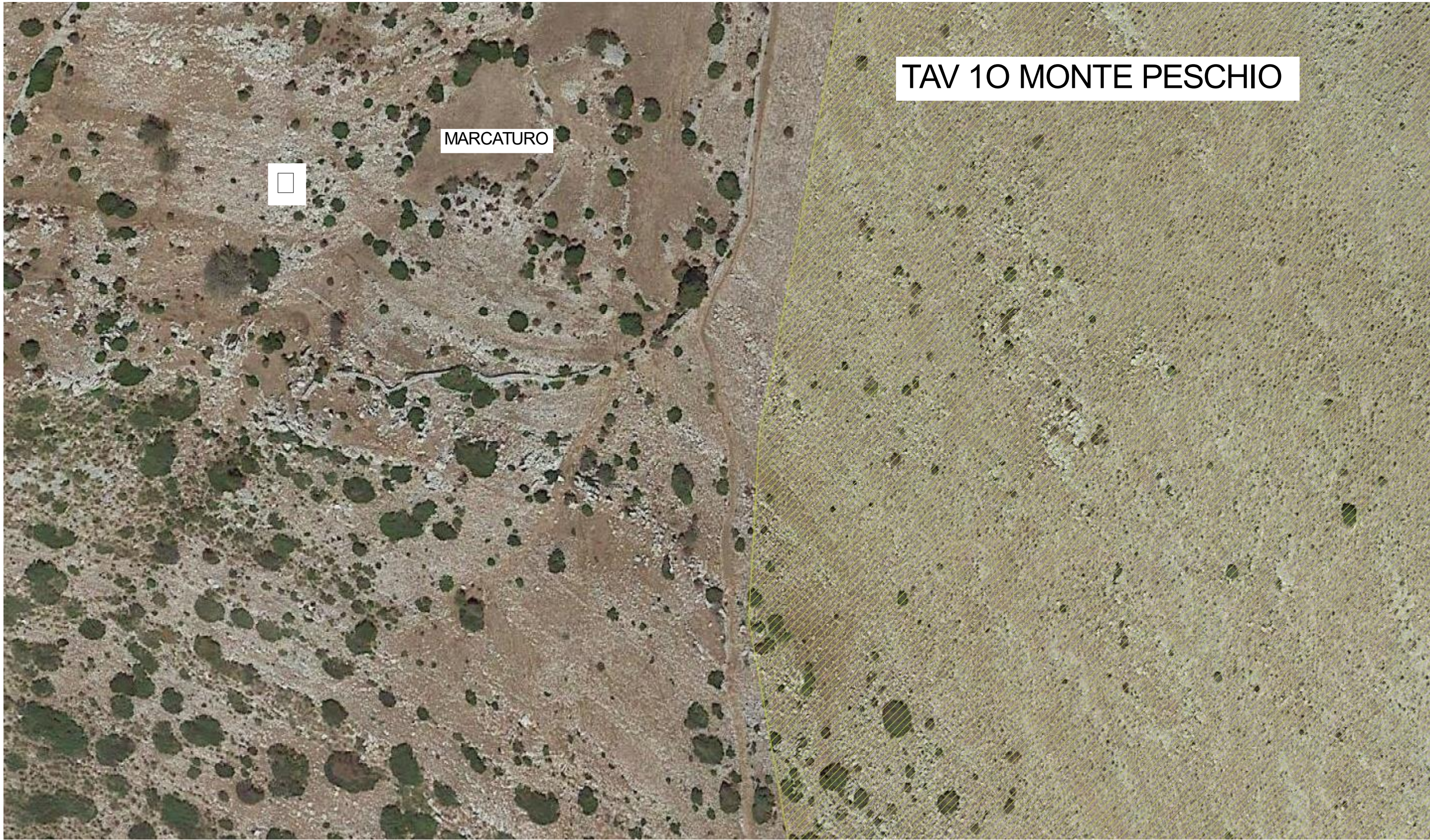


TAV 9 MONTE PESCHIO



TAV 10 MONTE PESCHIO

MARCATURO



TAV 11 MONTE PESCHIO



An aerial photograph showing a landscape with a winding path or road. A large area in the center and right is overlaid with a yellow hatched pattern, indicating a specific zone of interest. The terrain is a mix of light brown and greenish-grey, with some darker patches and small structures visible. The hatched area follows the path and extends into the surrounding fields.

TAV 12 MONTE CERASO

VADO DEI TERELANI

TAV 13 MONTE CERASO

LA CONA



An aerial photograph of a valley. A yellow hatched area is overlaid on the left side of the image, extending from the top left towards the bottom center. The terrain is a mix of brownish soil and green vegetation. Three white text boxes are present: one at the top center, one in the upper right, and one at the bottom center.

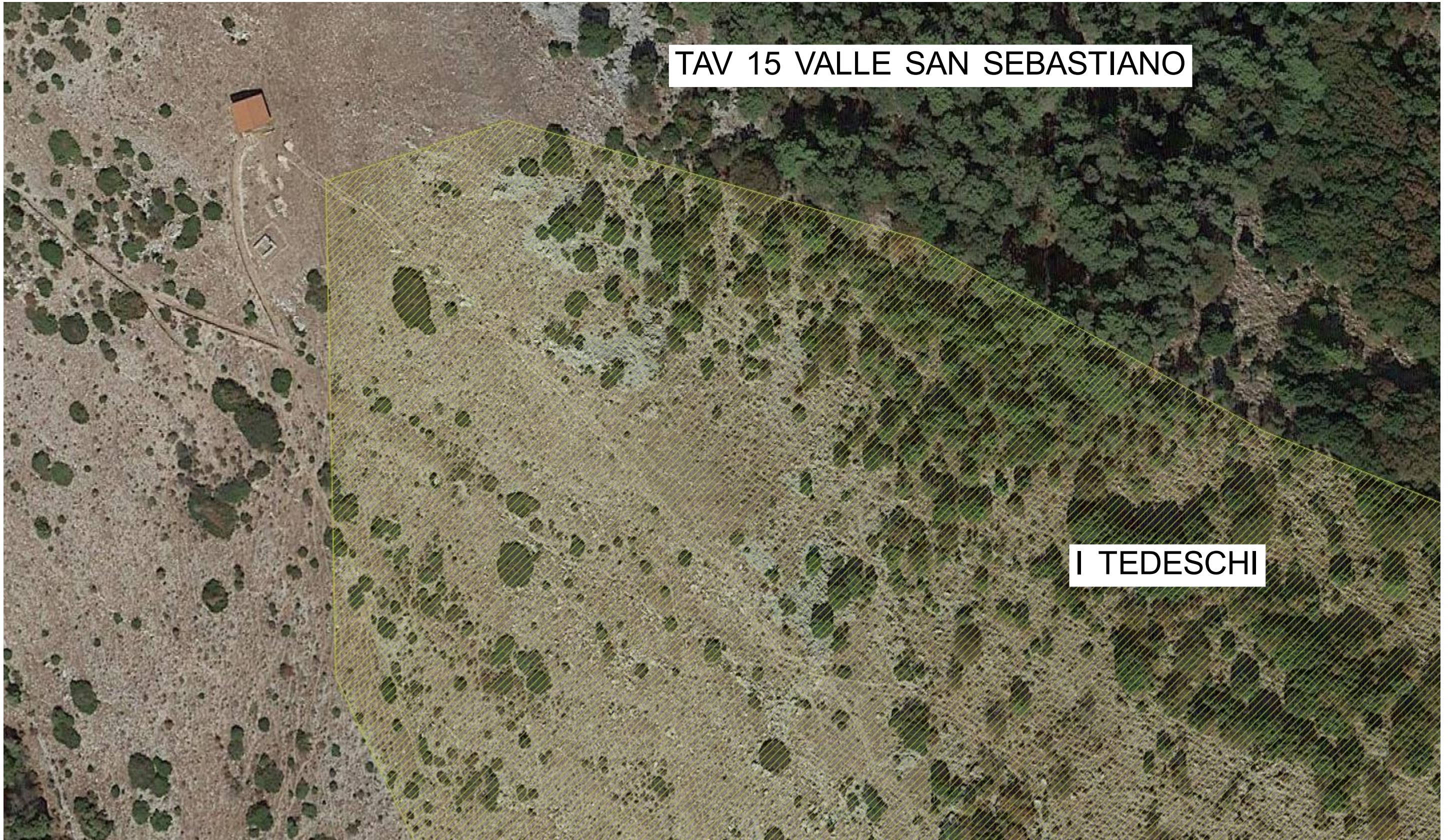
VALLE SAN SEBASTIANO

I TEDESCHI

TAV 14 MONTE CERASO

TAV 15 VALLE SAN SEBASTIANO


I TEDESCHI



TAV 16 COSTA DEI DOVERI

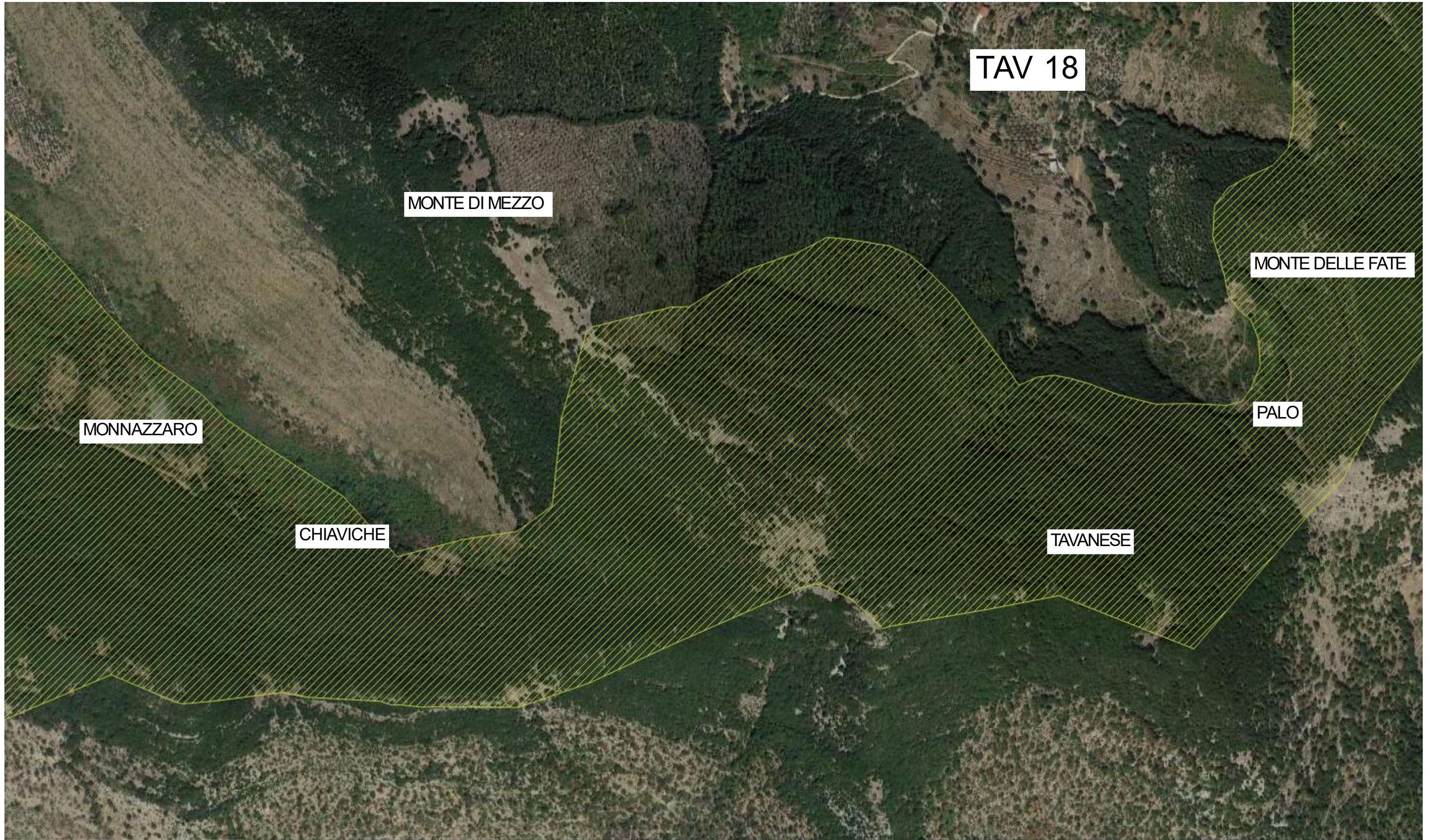
PRIMO TRATTO DOPO PINETA FINO SOPRA ALLA CESA COSTANTINO



An aerial photograph of a landscape. A large area in the center and right is filled with a yellow diagonal hatching pattern, indicating a specific zone or boundary. The background shows a mix of green vegetation and brownish terrain. Two white text labels are overlaid on the image. The first label, 'CESA DI COSTANTINO', is positioned at the top center, above the hatched area. The second label, 'TAV 17 COSTA DEI DOVERI', is located in the lower-left quadrant, partially overlapping the hatched area and the forested region.

CESA DI COSTANTINO

TAV 17 COSTA DEI DOVERI



TAV 18

MONTE DI MEZZO

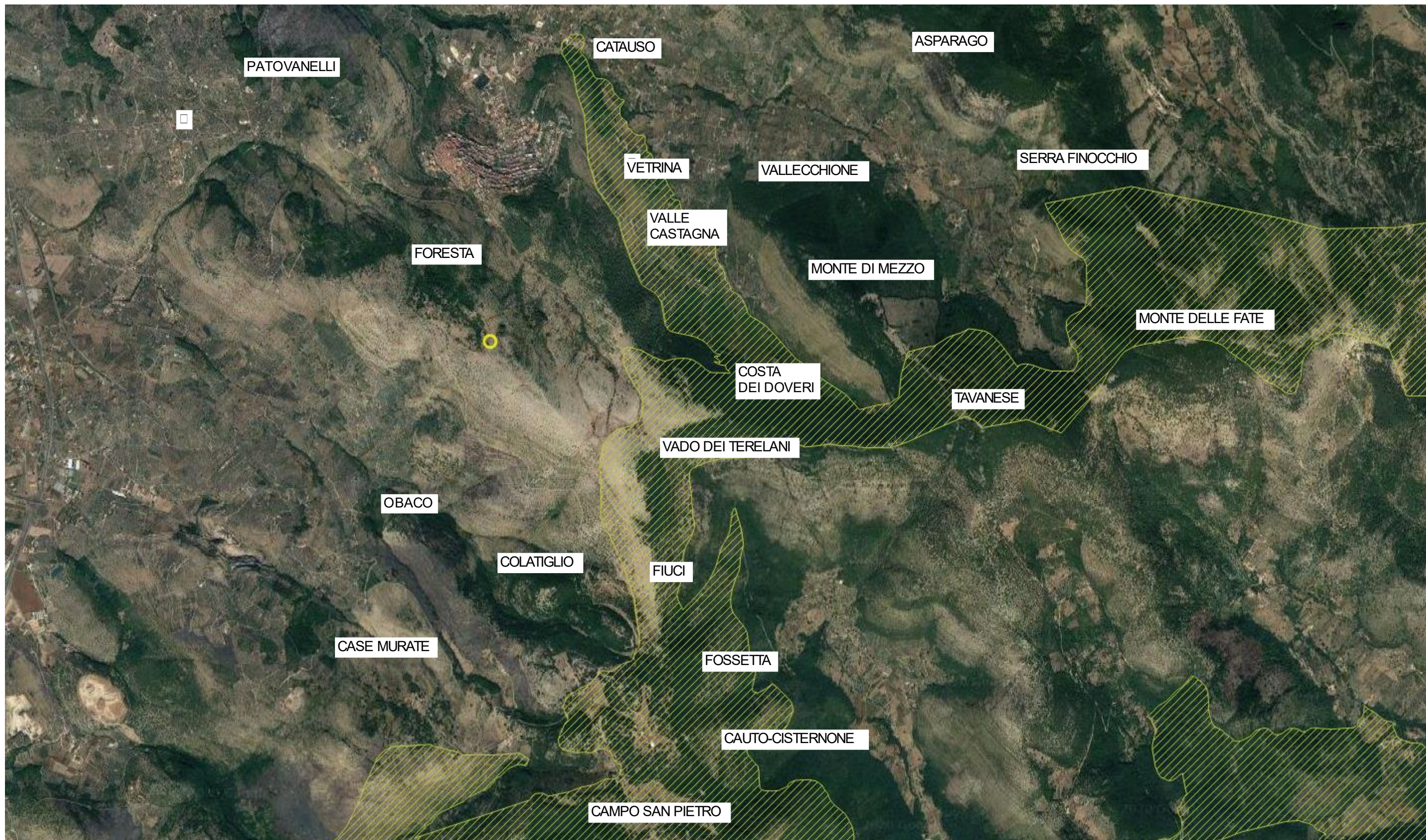
MONTE DELLE FATE

MONNAZZARO

PALO

CHIAVICHE

TAVANESE



TAV 20

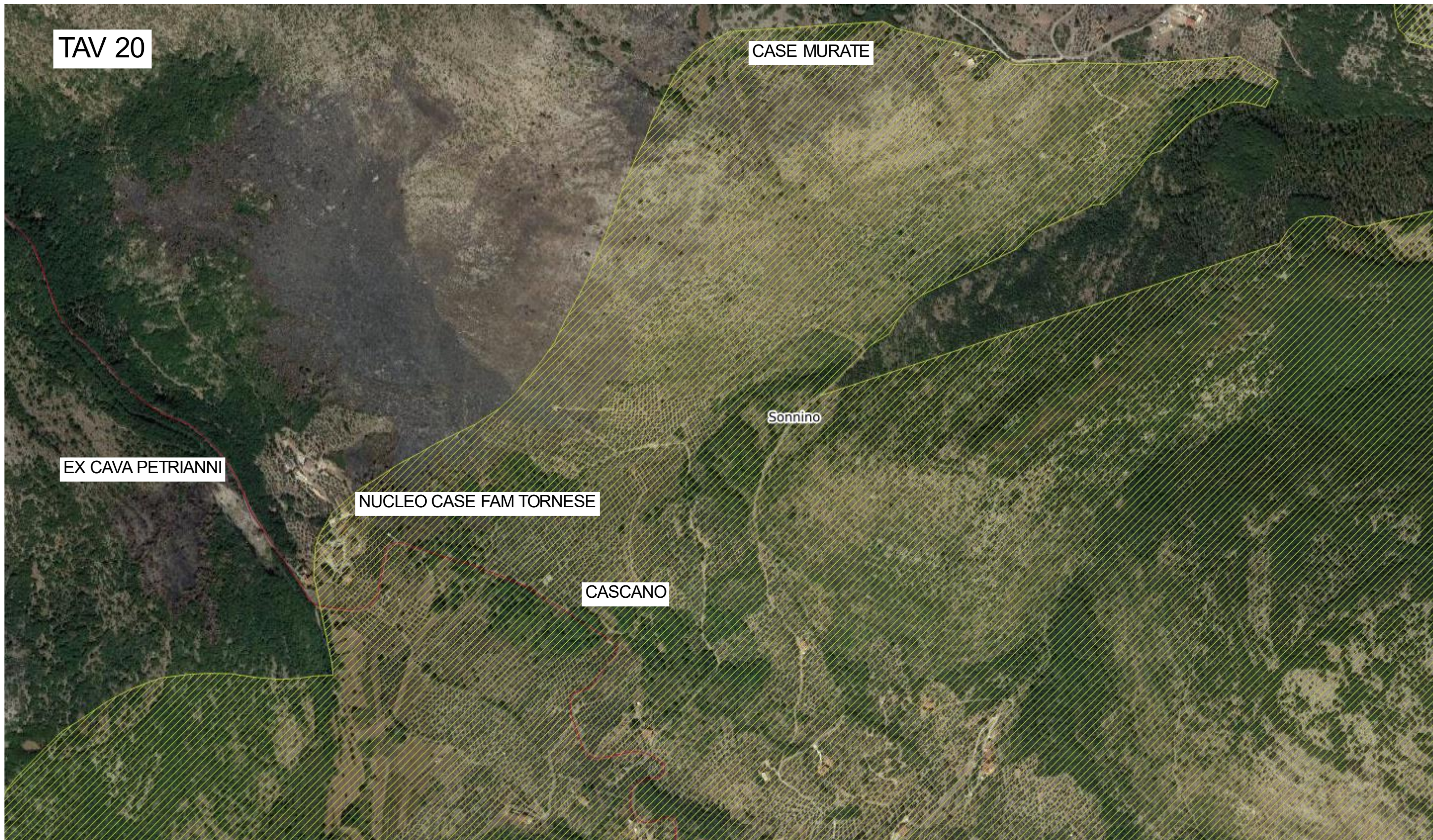
CASE MURATE

Sonnino

EX CAVA PETRIANNI

NUCLEO CASE FAM TORNESE

CASCANO



TAV 21

Sonnino

CAMPOSORIANO

CAVALLO BIANCO

Terracina

